



MEET THE NEED NC


Changing the I/DD landscape across the state


Systemic change for I/DD community services and supports requires a common agenda.


Where are we now regarding Unmet Needs for North Carolina's I/DD community?


 People with lived experience are key to our efforts.


 It is hard to find, keep and know how to best use services.


 People of all ages with I/DD and their families are surviving, not thriving.


 Many changes are going on with Medicaid: Medicaid Transformation & Expansion, 1915(i), and Care Management.

 Many people who need support are not getting it or don't know what help is available.

 The Registry of Unmet Needs (RUN) is **18,700 + and growing**; Waiver slots are

 Community living and inclusive employment are not realities for people with I/DD.

 People don't always agree on what's best for people with I/DD and community living.

 Schools are not preparing those with I/DD for living their most successful lives.

 We are in silos.

The terms Registry of Unmet Needs (RUN) or Registry refer to the waitlist of the Medicaid Innovations Waiver.

VISION STATEMENT



HOW WE WILL GET THERE

 Collect data and information

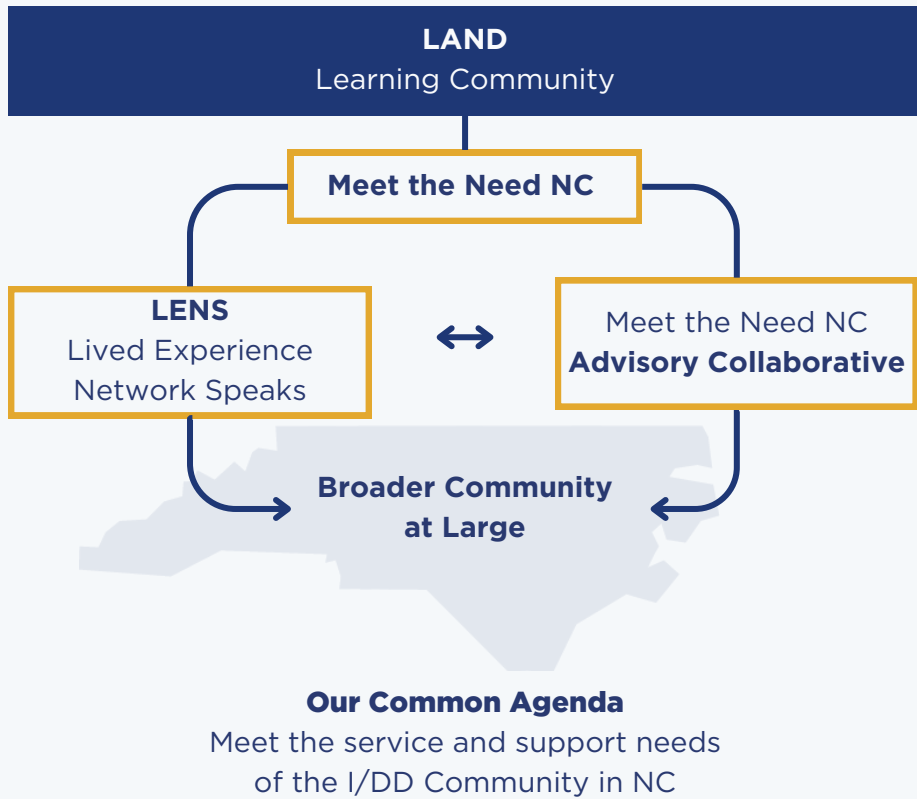
 Inform and educate target communities

 Advocate to increase funding for I/DD services and supports with policymakers

 Meet the needs of those on the Registry of Unmet Needs

Disclaimer: This information is current as of December 2023.

To learn more about Meet The Need NC, visit meettheneednc.org and contact Beth.Field.LAND@gmail.com.



What is Meet the Need NC (MTN)?

- Collective impact initiative
- Driver of system change for those with I/DD and their families
- NCCDD-funded grant
- Co-Creation, Equity, Transformation
- We all drive change together
- Meet the Need NC = LENS + Advisory Collaborative + Learning Community

What is LAND?

- Backbone of Meet the Need NC
- Guides, Inspires initiative
- Advocacy organization made up of people with I/DD lived experience

5 Conditions for Collective Impact

1. Common Agenda
2. Shared Measurement
3. Mutually Reinforcing Activities
4. Continuous Communication
5. Backbone Support (LAND)

Advisory Collaborative: This initiative brings together leading organizations, state agencies, and advocates across North Carolina to address the unmet needs of the I/DD community. The LAND/Meet the Need NC Advisory Collaborative brings voices together to advocate for I/DD services and supports for individuals and their families.

- **NCCDD:** North Carolina Council on Developmental Disabilities
- **LAND:** Leadership Alliance for Neurodevelopmental Disabilities
- **MHTA:** Mental Health Transformation Alliance
- **LENS:** Lived Experience Network Speaks
- Grupo De Apoyo Poder Y Esperanza



View the full list of our partners!

This project was supported, in part by grant number 2201NCSCDD (\$2,155,429.00), from the U.S. Administration for Community Living, Department of Health and Human Services, Washington, D.C. 20201. Grantees undertaking projects with government sponsorship are encouraged to express freely their findings and conclusions. Points of view or opinions do not, therefore, necessarily represent official ACL policy.



A Program of
Mental Health
Transformation
Alliance



Sign Up for Our
Mailing List!